



TPI CORPORATION

America's Comfort Conditioning Company



Markel®
Products Company

Raywall
Comfort Conditioning Products

fostoria®



1-800-682-3398 | www.tpicorp.com

ELECTRIC WALL HEATERS WITH OCCUPANCY SENSOR AND NIGHT SETBACK FEATURES

WALL HEATER WITH DIGITAL THERMOSTAT, OCCUPANCY, AND SETBACK OPTIONS



3450 SD SERIES 2 - 5 KW

- Occupancy sensor on front of unit activates energy saving
- Thermostat learns your schedule based on detected movement
- Set desired comfort level and set-back lever up to 12°F
- Heavy duty architectural style heater with bar stock grill and aluminum frame
- Heater and thermostat are made in USA

CABINET HEATER WITH DIGITAL THERMOSTAT AND OCCUPANCY SENSOR OPTION



6300 SD SERIES 2 - 24 KW

- Ideal installation in stairways, entrance ways, and schools
- Thermostat can use two stage operation feature on cabinet heater applications
- Occupancy sensor and set-back feature are energy saving for any application
- Key lock feature option for tamper resistance in commercial applications
- Air inlet and outlet configuration easily changeable in field

*Shown with optional locking mechanism

UNIT HEATER WITH OCCUPANCY SENSOR AND SETBACK OPTION



5100 SD SERIES 3.3 - 100 KW

- Digital readout control on front for easy adjustment
- Set back feature is energy saving in warehouse and utility applications
- Can use two stage feature on unit heaters 25 to 50 KW
- Reduces wiring to wall thermostat
- Heater and thermostat are made in USA

ABOUT TPI CORPORATION

For over 65 years TPI Corporation has been known as America's Comfort Conditioning Company. Today - as a U.S. based privately held manufacturer - TPI Corporation continues to produce innovative, industry leading products for the electric heating, fan and ventilation, industrial lighting, commercial controls, and industrial oven markets. So, if you have a need in the industrial, commercial, or residential marketplace - give us a call.

CERTIFICATION

Most products featured in this catalog are ETL certified. See website for individual product certification listings.



ELECTRIC UNIT HEATERS

HAZARDOUS LOCATION FAN FORCED UNIT HEATER



HLA SERIES 3.3 - 25 KW

- Class 1 Group D & Class 2 Groups E, F, G Divisions 1 & 2
- Permanently sealed liquid to air finned tube heat exchanger
- Built in thermostat and disconnect with pilot light option
- Stainless steel and aluminum pressure relief valve
- Ethol glycol to water mixture used as a heat transfer fluid

WASHDOWN RATED FAN FORCED UNIT HEATER



5500 SERIES 3.3 - 48 KW

- Stainless steel finned tubular electric elements
- Disconnect switch, thermostat, and pilot light standard
- Three position ON / OFF / FAN CONTROL on control panel
- Capillary thermostat with stainless steel sensor
- NEMA 4x non-metallic control panel on bottom of unit

HAZARDOUS LOCATION CONVECTION HEATER



FEP SERIES 800 - 3400 WATTS

- Class 1 Group B, C, D - Divisions 1 & 2, 280 Degrees C
- Bottom in, front out air flow
- Factory installed disconnect and thermostat options
- Stainless steel cartridge element in aluminum finned copper
- Heavy duty 16-gauge housing, powder coat gray textured finish

HORIZONTAL OR VERTICAL FAN FORCED UNIT HEATER



5100 SERIES 3.3 - 100 KW

- Heating element copper clad steel sheath with brazed fins
- Totally enclosed, permanently lubricated motor
- 1 stage 2.5 to 20 KW and 2 stage from 25 to 50 KW units
- 60 and 70 KW models 3 stage - 80, 90, 100 KW models 4 stage
- Electronic step controller for BAS interface on 60-100 KW units

HORIZONTAL FAN FORCED UNIT HEATER



UH SERIES 3.3 - 48 KW

- Heavy gauge welded steel cabinet with powder coat finish
- Individually adjustable louver assembly
- Totally enclosed, permanently lubricated motor
- Circular copper clad steel sheath element with brazed fins
- Controls built into control enclosure on heater

COMMERCIAL FAN FORCED ELECTRIC HEATERS

CONFINED SPACE PLENUM RATED HEATER



5700 SERIES 1.8 - 5 KW

- Zero clearance for wall, ceiling, and floor mounting
- Fits easily between joists for typical installations
- Single phase models field changeable for 1874 to 4000 watts
- 24 Volt control on three phase model with hydraulic thermostat
- Made in USA

HORIZONTAL HIGH VOLUME PLENUM HEATER



7200 SERIES 2 - 50 KW

- Heavy duty galvanized steel cabinet and control enclosure
- 24 Volt control with disconnect for single point connection
- Acoustically insulated with 1" fiberglass insulation
- Inlet and outlet screens and filter rack with filter
- Made in USA

LOW PROFILE PLENUM RATED HEATER



7300 SERIES 5 - 18 KW

- Low profile 11 3/4" high cabinet for easy clearance
- Dust tight control enclosure
- 24 Volt control with disconnect for single point connection
- High static pressure for easy ducting on inlet and outlet
- Made in USA

MULTIPLE ANGLE FAN FORCED CABINET HEATER



6300 SERIES 2 - 24 KW

- Field convertible inlet and outlet grill arrangement
- Powder coated, textured paint on heavy duty steel cabinet
- Low voltage control and disconnect switch
- Can be fully recessed, partially recessed, or flush mounted
- One or two stage operation with built in thermostat

HIGH BAY DOWNFLOW ELECTRIC UNIT HEATER

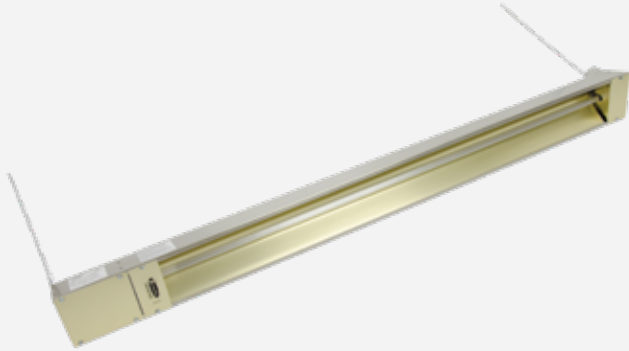


2600 SERIES 5 - 50 KW

- Control enclosure with disconnect and low voltage controls
- 16-gauge steel cabinet powder coated finish
- Ideal for high bay and auditoriums
- Installed with optional mounting bracket or field supplied bracket
- Optional outlet diffusers

ELECTRIC INFRARED OVERHEAD HEATERS AND CONTROLS

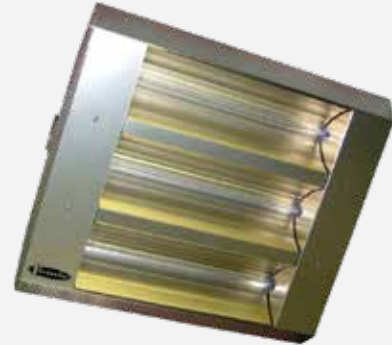
OUTDOOR / INDOOR RATED QUARTZ INFRARED HEATER



OCH SERIES 1500 TO 3000 WATTS

- Listed for suspended, totally exposed or indoor spot heating
- Gold anodized aluminum reflector and end caps
- Powder coated steel or stainless steel housing
- 60 degree symmetrical heat pattern
- Made in USA

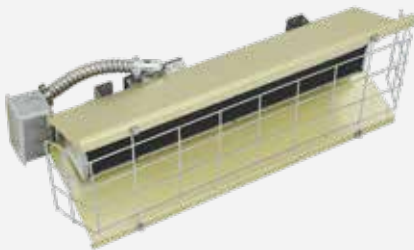
MULTI-MOUNT QUARTZ LAMP ELECTRIC INFRARED HEATER



TH / THSS SERIES 3.2 TO 10.95 KW

- 2 or 3 element fixtures both painted steel or stainless steel
- Gold anodized aluminum reflectors and end caps
- 30, 60, 90 degree symmetrical or asymmetrical heat pattern
- Snow melting applications and comfort heating
- Made in USA

FLAT PANEL EMITTER ELECTRIC INFRARED HEATER



FSS SERIES 1450 TO 9500 WATTS

- High density medium wave electric radiant heat
- Rugged flat panel emitter great for high vibration areas
- 25,000 hour expected element life
- Uniform heat pattern coverage with 60 degree symmetric pattern
- Made in USA

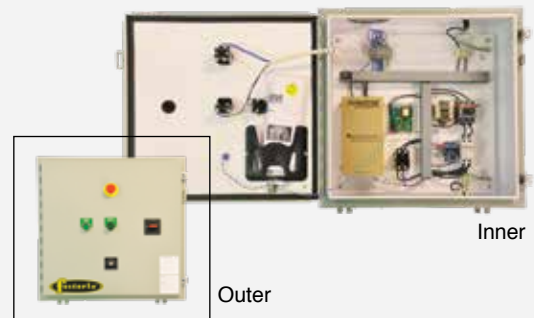
OUTDOOR RATED PATIO STAINLESS STEEL INFRARED HEATER



RPH SERIES 1600 WATTS

- 30 degree symmetrical heat pattern with instant heat intensity
- Ruby red quartz lamp infrared heating element for less glare
- Stainless steel housing with coilzak aluminum reflector
- Great for patio or restaurant comfort heating applications
- Made in USA

INDUSTRIAL CONTROL PANELS FOR HEATER CONTROLS



ICP SERIES

- Heavy duty painted steel NEMA 4 enclosure
- Snow melting applications
- SCR controls with potentiometer or 4-20MA connections
- Highest quality circuit breakers and disconnect switch
- Custom made for almost any application

COMMERCIAL AND INDUSTRIAL ELECTRIC HEATERS

OPEN COIL DUCT HEATERS



HF SERIES UP TO 1000 KW

- Custom made to almost any specification or KW up to 1000 KW
- SCR control for energy saving and variable heat control
- Insert or flanged construction
- Available with NEMA 4 outdoor rated control enclosure
- All optional controls available for custom specifications

FINNED TUBULAR STAINLESS STEEL ELEMENT DUCT HEATERS



CHMS SERIES UP TO 1000 KW

- Stainless steel finned tubular elements
- Available with SCR or STEP controller for BAS connections
- Insert or flanged construction
- Available with NEMA 4 outdoor rated control enclosure
- All optional controls available for custom specifications

FAN PAC FAN FORCED UNIT HEATER



MFH-E SERIES UP TO 40 KW

- Custom built with up to 40 KW of electric heat
- Built in 24 Volt control in heavy gauge control enclosure
- Can be stand alone or ducted with up to .7 inch static
- Almost any voltage or wattage with SCR control option
- Made in USA

SUPPLEMENTAL DUCT MOUNTED HEATER



MFH-E SERIES 1500 TO 3000 WATTS

- Ready pack unit with thermostat for hard to heat areas
- Powder coated finish on heavy duty metal enclosure
- Units can be ducted or stand alone heating with zero clearance
- All units have 6" inlet and outlet duct connections
- Made in USA

SUPPLEMENTAL DUCT MOUNTED HEATER



HP SERIES 1000 TO 1400 WATTS

- Heavy gauge welded steel cabinet with powder coated finish
- Zero clearance
- Totally enclosed, permanently lubricated motor
- Two stage operation
- Controls built into control enclosure on heater

ELECTRIC WALL MOUNTED HEATERS

COMMERCIAL FAN FORCED WALL HEATER



3320 SERIES 750 TO 4800 WATTS

- Heavy gauge stamped grill with powder coated bronze finish
- Tamper proof thermostat and disconnect standard
- Available in single and three phase models
- Quiet vane axial fan with steel block fin element
- Made in USA

LOW PROFILE COMMERCIAL FAN FORCED WALL HEATER



4400 SERIES 750 TO 2000 WATTS

- Powder coated 20-gauge steel front with aluminum frame
- Can be arranged for left, right, or top discharge
- Built in thermostat and shipped with wall box
- Finned tubular heating element and manual reset limit control
- Made in USA

HEAVY DUTY FAN FORCED ELECTRIC WALL HEATERS



3420 SERIES 2 - 5 KW

- Powder coated bar stock grill with aluminum frame
- Propeller type fan blade for 245 CFM
- Corrosion resistant steel tubular element with brazed steel fins
- Positive off thermostat for ON / OFF temperature control
- Made in USA

LARGE HEAVY DUTY FAN FORCED ELECTRIC WALL HEATER



3450 SERIES 2 - 5 KW

- Powder coated bar stock grill with aluminum frame
- Larger control section for 24 Volt control and circuit breaker
- Permanently lubricated unit bearing motor
- Factory installed controls with thermostat and limit controls
- Made in USA

FAN FORCED WALL HEATER

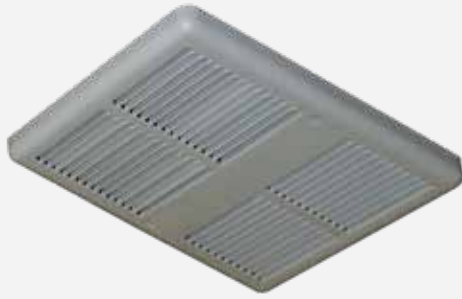


3310 SERIES 750 TO 4800 WATTS

- Powder coated 18-gauge steel front
- Vane axial fan and steel block fin element
- Available with or without summer fan switch
- Color options available with white or ivory powder coat finish
- Made in USA

CEILING MOUNTED ELECTRIC COMMERCIAL HEATERS

SMALL ROOM FAN FORCED ELECTRIC CEILING HEATER



3000 SERIES 750 TO 2000 WATTS

- Multiple wattage steel block fin element
- 18-gauge powder coated grill
- Wall or ceiling applications
- Built in thermostat and disconnect switch options
- Made in USA

COMMERCIAL FAN FORCED CEILING HEATER



3380 SERIES 1500 TO 4800 WATTS

- Powder coated white heavy steel front cover
- Built in thermostat
- Van axial fan and steel block fin element
- Optional T-Bar mounting frame available
- Made in USA

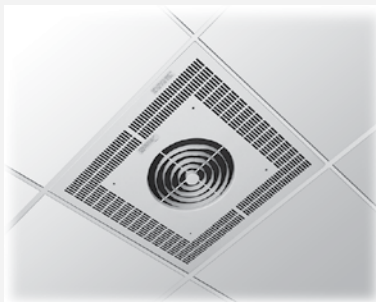
SURFACE MOUNTED COMMERCIAL / INDUSTRIAL CEILING HEATER



3470 SERIES 2 - 5 KW

- Surface mounted white powder coated housing
- Standard low voltage control, factory wired
- Optional factory installed thermostat and disconnect switch
- Night setback relay option, factory installed
- Made in USA

RECESSED COMMERCIAL / INDUSTRIAL CEILING MOUNTED HEATER



3480 SERIES 2 - 5 KW

- White powder coated grill with front intake and discharge
- Low voltage control option standard
- Factory installed disconnect switch and control options
- Recessed in T-Bar installation or optional hard ceiling frame
- Made in USA

RADIANT CEILING PANEL T-BAR OR RECESSED FRAME INSTALLATION

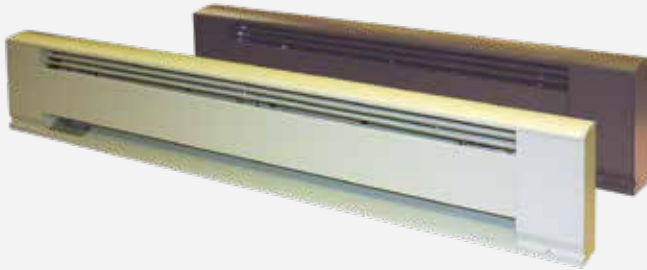


CP / RCP SERIES 250 TO 750 WATTS

- T-Bar or surface mount construction available
- Textured powder coated surface
- Optional silk screen to match ceiling tile
- 3/8" flexible conduit for ease of installation included
- Easy zoning of heat output for use with existing equipment

ELECTRIC CONVECTION BASEBOARD HEATERS AND COMMERCIAL CONVECTORS

ALL ALUMINUM HYDRONIC ELECTRIC BASEBOARD HEATER



3900 SERIES 400 TO 2000 WATTS

- Liquid filled hydronic electric heating element
- Extruded aluminum housing and end caps
- Wire guard extends entire length of heater element opening
- Standard white or brown with special colors available
- Made in USA

ARCHITECTURAL STYLE ELECTRIC BASEBOARD HEATER



3700 SERIES 400 TO 2000 WATTS

- Aluminum finned electric heating element
- Extruded aluminum housing and end caps
- Wire guard extends entire length of heater element opening
- Standard white or brown with special colors available
- Made in USA

RADIUS FRONT DRAFT BARRIER ALUMINUM EXTRUDED HEATER



9100 SERIES 28" THRU 120" UNITS

- Architectural design radius front
- Single element design for single phase applications
- Bottom inlet top outlet extruded aluminum enclosure
- Made for wall to wall perimeter fit in any room or area
- Made in USA

RADIUS FRONT DRAFT BARRIER FOR 3 PHASE APPLICATIONS



9300 SERIES 28" THRU 120" UNITS

- Three elements available for three phase applications
- Bottom inlet or front inlet design
- Control in end junction box or extended control sections
- Made for wall to wall perimeter fit in any room or area
- Made in USA

CUSTOM ARCHITECTURAL CABINET CONVECTORS



RDBT SERIES 24" THRU 120" UNITS

- Round extruded aluminum enclosure for custom applications
- Special color is available with bronze standard color
- Pedestal mounted for end to end fit
- Controls factory mounted in junction box or extended unit
- Made in USA

VENTILATION PRODUCTS

CHR SERIES

48", 56" & 60"



- 48", 56", or 60"
- 120V, 277V on specific models
- Downdraft on reversible

HD, IHP & ACH PEDESTAL FAN SERIES

3,000 - 6,800 CFM



- 20", 24", or 30"
- 1/4, 1/3 or 1/2 HP models available
- Oscillating fan heads on certain models
- Various mounts available
- ETL Certified

CF SERIES

333 - 9,955 CFM



- Commercial / Industrial grade air curtains
- 36", 48", or 60" Industrial grade air curtains
- 10' or 12' installation available - 120 Volt
- Optional heating sections available
- ETL Certified

CFC SERIES

942 - 2,119 CFM



- 35", 47", 59" commercial air curtains
- 120V operation
- 10' mounting height
- UL Listed

PB SERIES

6,800 - 14,400 CFM



- 36", 42", or 48" portable blowers
- 120 Volt operation from 1/3, 1/2, 3/4 HP operation
- Standard, swivel or suspension mount available
- ETL Certified with the exception of models PB 36-B-HL, PB-42-B-HL & PB 48-B-HL

MCD SERIES

3,050 - 60,750 CFM



- 18" to 60" models
- 1/4 to 15 HP, motors totally enclosed or hazardous location
- Low, medium or high stand mounts
- From 3,050 to 60,750 CFM Ratings

VENTILATION PRODUCTS

F SERIES 700 - 2,100 CFM



- 12", 18" or 24" models
- 120 Volt operation
- Floor, wall/ceiling, or high stand mounts available
- Corrosion resistant models for outdoor applications
- ETL Certified

U SERIES 700 - 2,100 CFM



- 12", 18", or 24" models
- 120 Volt operation
- Yoke mount standard
- 700 to 2100 CFM
- Permanently lubricated motors
- ETL Certified



EVAP48HD

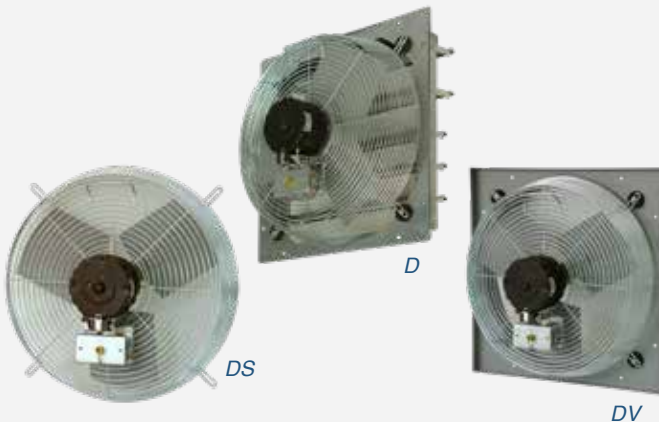
EVAP SERIES 4,500 - 22,500 CFM

- 16", 24" 36", or 48" models available
- Variable speed motors
- 120 Volt operation
- Approximately 1,125 to 5,625 sq. ft. coverage
- Hazardous Location models available
- ETL Certified



EVAP16HD

D, DS & DV SERIES 680 - 3,950 CFM



- 10" to 30"
- 1/12 HP to 1/4 HP motors
- 120 Volt operation
- Three different models to choose from
- Totally enclosed motors

EHB SERIES 4,900 - 44,600 CFM



- 24" to 60"
- Totally enclosed hazardous location motors
- 1 or 3 phase models
- Cast aluminum blades on hazardous location models
- 1/4 HP to 5 HP motor ratings

NEW PRODUCTS FOR 2018!

ARCHITECTURAL INFRARED HEATERS

FSA SERIES FLAT PANEL EMITTER OVERHEAD INFRARED HEATER

- High density medium wave radiant heat
- More efficient than metal sheath elements
- More uniform heat pattern
- Powder coated extruded aluminum frame
- Custom color powder paint
- Heavy duty wire guard factory installed
- 25,000 hour element life expectancy
- Made in U.S.A.



THA SERIES MUL-T-MOUNT QUARTZ LAMP OVERHEAD INFRARED HEATER



- Suspended overhead unit
- Listed for totally exposed areas
- Recessed applications
- Gold anodized reflector
- Powder coated aluminum frame
- Custom color powder paint
- Clear quartz lamp elements
- Two or three lamp fixtures
- 3.2KW to 10.95KW units
- Made in U.S.A.

AMBER GRAY SLEEVE FOR QUARTZ LAMP ELEMENTS NOW AVAILABLE!

Sleeve and element combination are new size and color!



ICP CONTROL PANELS FOR USE WITH ANY INFRARED SERIES



- Custom made panels for control of multiple heaters
- All controls factory installed and wired
- SCR control with potentiometer or 4-20 MA input
- NEMA 4 wall mounted panels
- Single point door interlock disconnect switch
- Timer and switches for staging controls
- Remote push button ON/OFF control
- Made in U.S.A.